



Mosquito Identification Guide: Guam

Photo credit: Walter Reed Biosystematics Unit (WRBU)

David Pecor

Walter Reed Biosystematics Unit

May 3, 2022

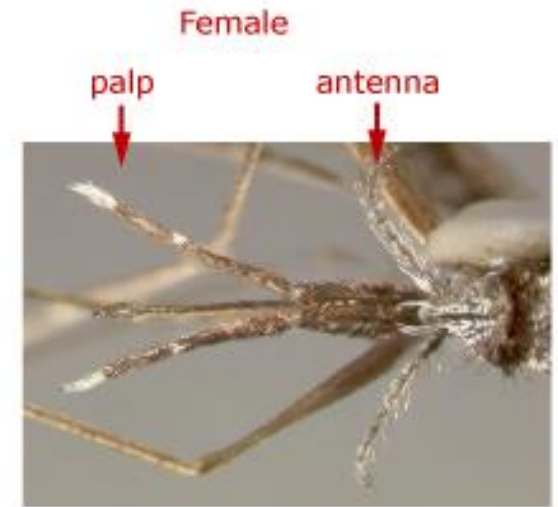
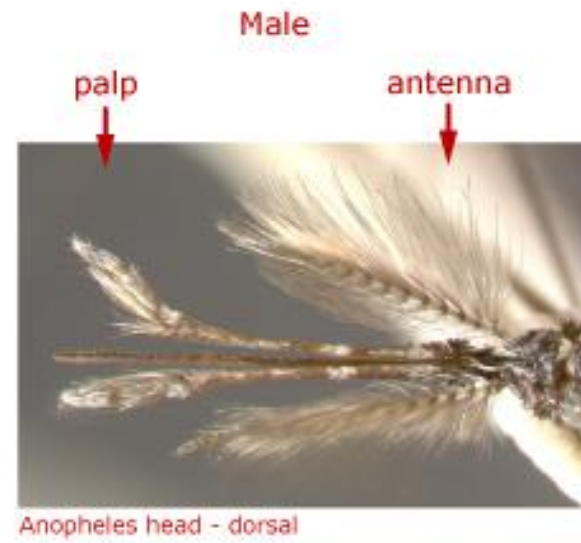
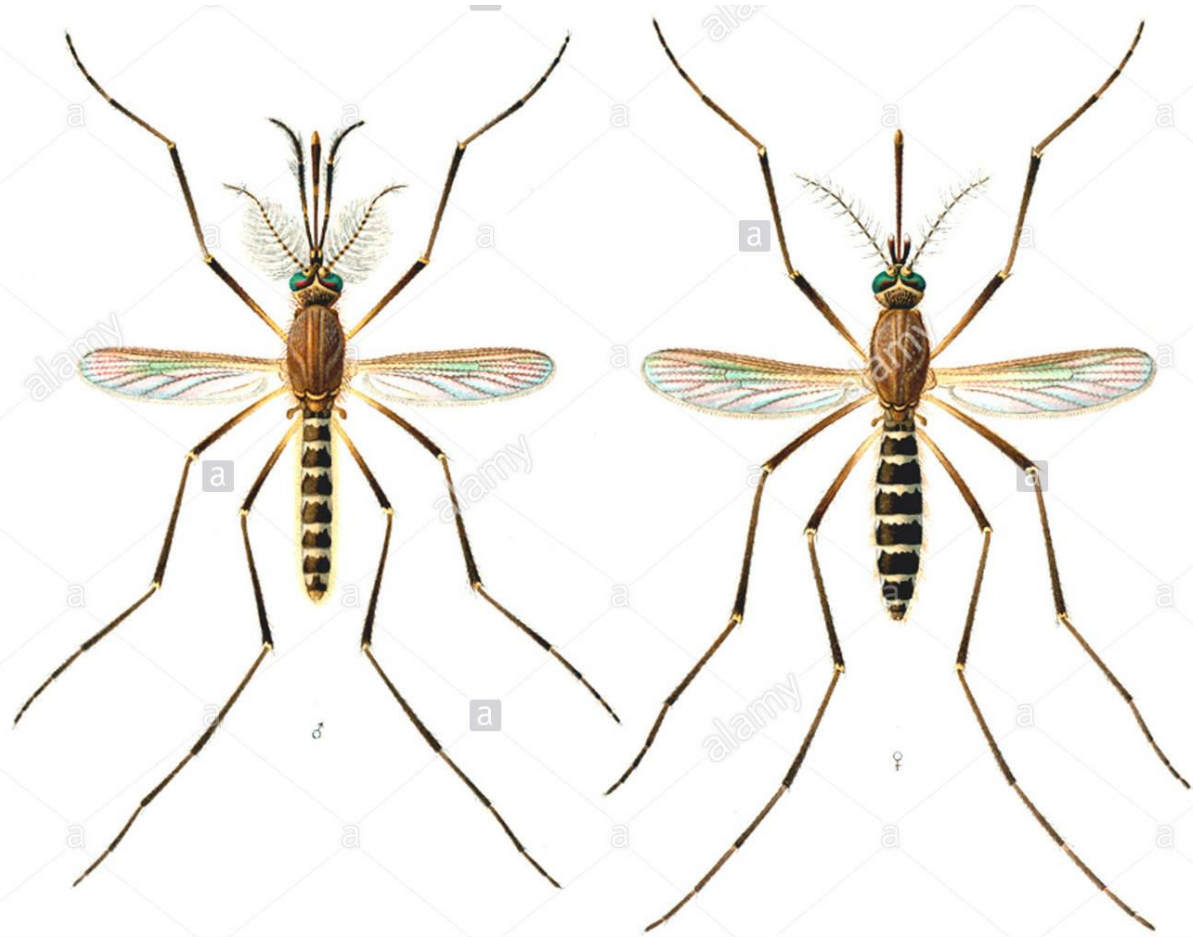


Overview

- Males v. Females
- Identification to Genus
 - *Aedes*
 - *Anopheles*
 - *Culex*
- Identification to Species
 - *Aedes aegypti*
 - *Aedes polynesiensis*
 - *Aedes hensilli*
 - *Anopheles barbirostris*



How to Differentiate Males and Females





Identifying
the Medically
Important
Genera:
Aedes,
Anopheles
and *Culex*

Aedes

Diagnostic Characters

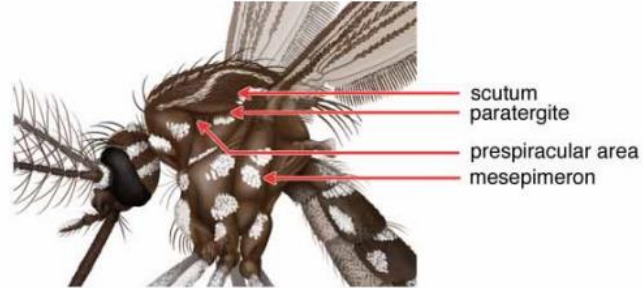
Abdomen: Apex usually (but not always) more or less pointed in females.



ADULTS

:

Thorax: Prespiracular setae absent; postspiracular setae nearly always present:



Wing: Remigial setae absent



Culex

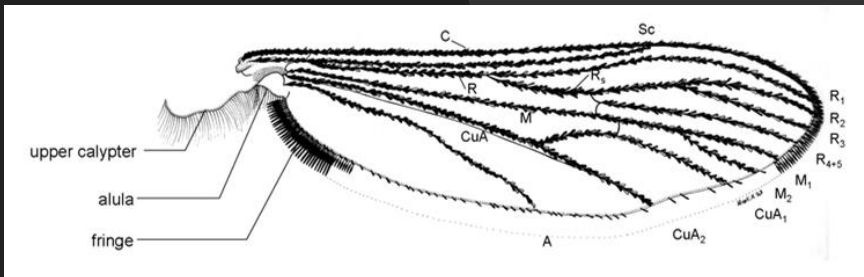
Diagnostic Characters

ADULTS

:
Thorax: Prespiracular and postspiracular setae absent



Wings: Alula with narrow fringe of scales



Anopheles

Diagnostic Characters

Abdomen: Largely devoid of scales or with only small scale-patches; setae present.



ADULTS

• **Head:** Palpus about as long as proboscis



Thorax: Posterior margin of scutellum evenly rounded.



Wing: Usually with regular pattern of pale and dark spots.



Genus *Anopheles*



Genus *Aedes*



Genus *Aedes*



Genus *Culex*



Genus *Culex*



Identifying Mosquitoes to Species Level

Aedes aegypti

Aedes hensilli

Aedes polynesiensis

Anopheles barbirostris



Aedes aegypti

Diagnostic Characters

WRBU Species
Page

ADULTS:

- **Head:** Palpus with apical white scales; proboscis entirely dark-scaled.
- **Thorax:** Scutum with lyre-shaped white markings; scutellum with broad white scales on all lobes.
- **Legs:** Hind tarsi with pale basal bands, sometimes with faint apical bands; hindtarsomere 5 all or mostly white.

Aedes aegypti (Linnaeus, 1762)



Aedes polynesiensis

Diagnostic Characters

WRBU Species Page

ADULTS:

- **Head:** Proboscis entirely dark-scaled; palpus with white scales at apex; pedicel with lateral and mesal scales.
- **Thorax:** Scutum with median silvery stripe; scutellar mid-lobe with broad white scales and dark apical scales; scales on antepnotum, postpronotum and paratergite; lower mesepimeral scales white; proepisternal white scale patch; subspiracular area without scales; supraalar scales as complete white line; antealar scales broad; costa with distinct silvery spot at base.
- **Legs:** Fe-II without anterior median white line; Fe-III with anterior broad white longitudinal stripe broadened on basal 0.3-0.5; Ta-III5 white.



Aedes polynesiensis Marks, 1951



Aedes hensilli

Diagnostic Characters

ADULTS:

Head: Proboscis without white band.

Thorax: Scutum with a narrow median-longitudinal white stripe. Lower mesepimeral white scale patch present or well developed, with more than 3 scales.

Abdomen: Abdominal terga without complete basal white bands.

Legs: Hindtarsomere 5 not entirely white or with basal one-half white.

***Aedes hensilli* Farner, 1945**



Anopheles barbirostris

Diagnostic Characters

WRBU Species
Page

ADULTS:

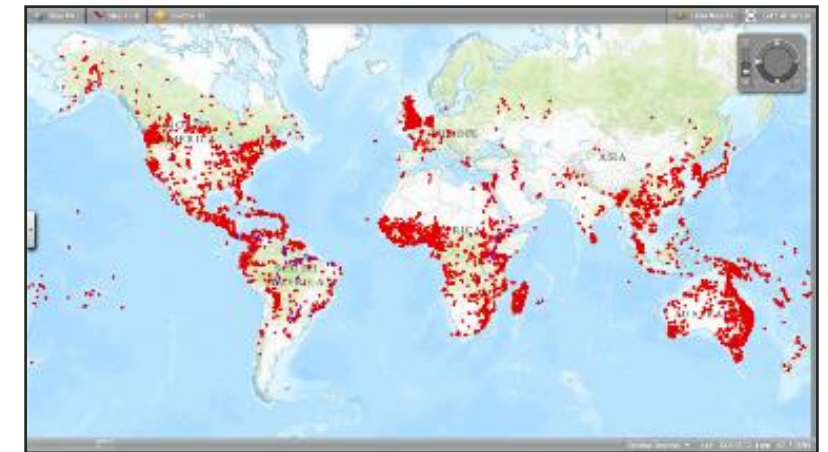
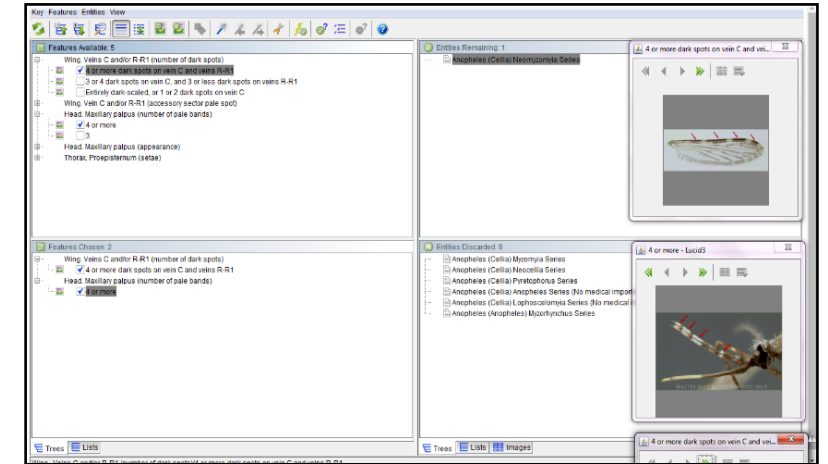
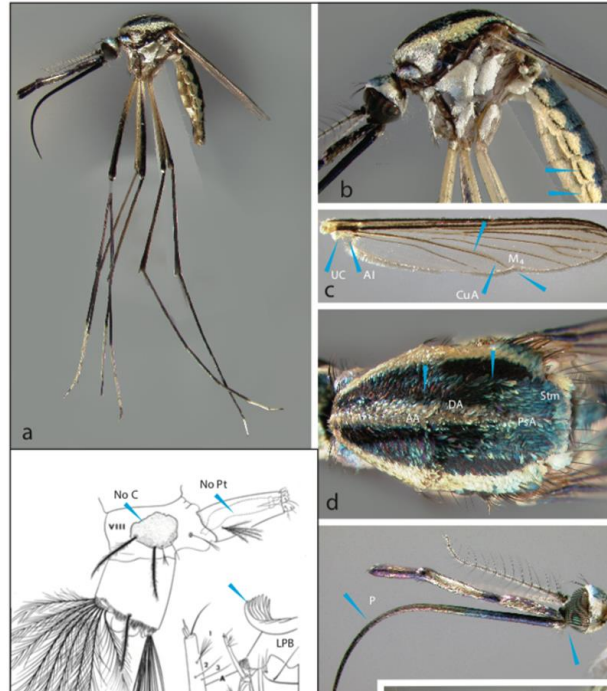
- **Head:** Proboscis entirely dark-scaled; palpus with dark, numerous and erect scales; pedicel with dorsal and lateral scales; clypeus without scales.
- **Thorax:** Anteprenotal scales present (not distinct in photo); pleuron with white scale patches.
- **Abdomen:** Sterna with median patches of pale scales and rows of pale scales on lateral margins; VII-S with a tuft of dark scales.
- **Wing:** With three large dark spots on costa (C) and veins R–R1; costa lacking a presector pale spot; apex with two small fringe spots.

Anopheles barbirostris van der Wulp, 1884



Additional Resources: wrbu.si.edu

- [Species Pages](#)
- [Keys](#)
- [VectorMap](#)
- [Contacts](#)
- [Submitting Specimens to the USNM](#)
- [More info about WRBU](#)



Smithsonian
National Museum of Natural History

