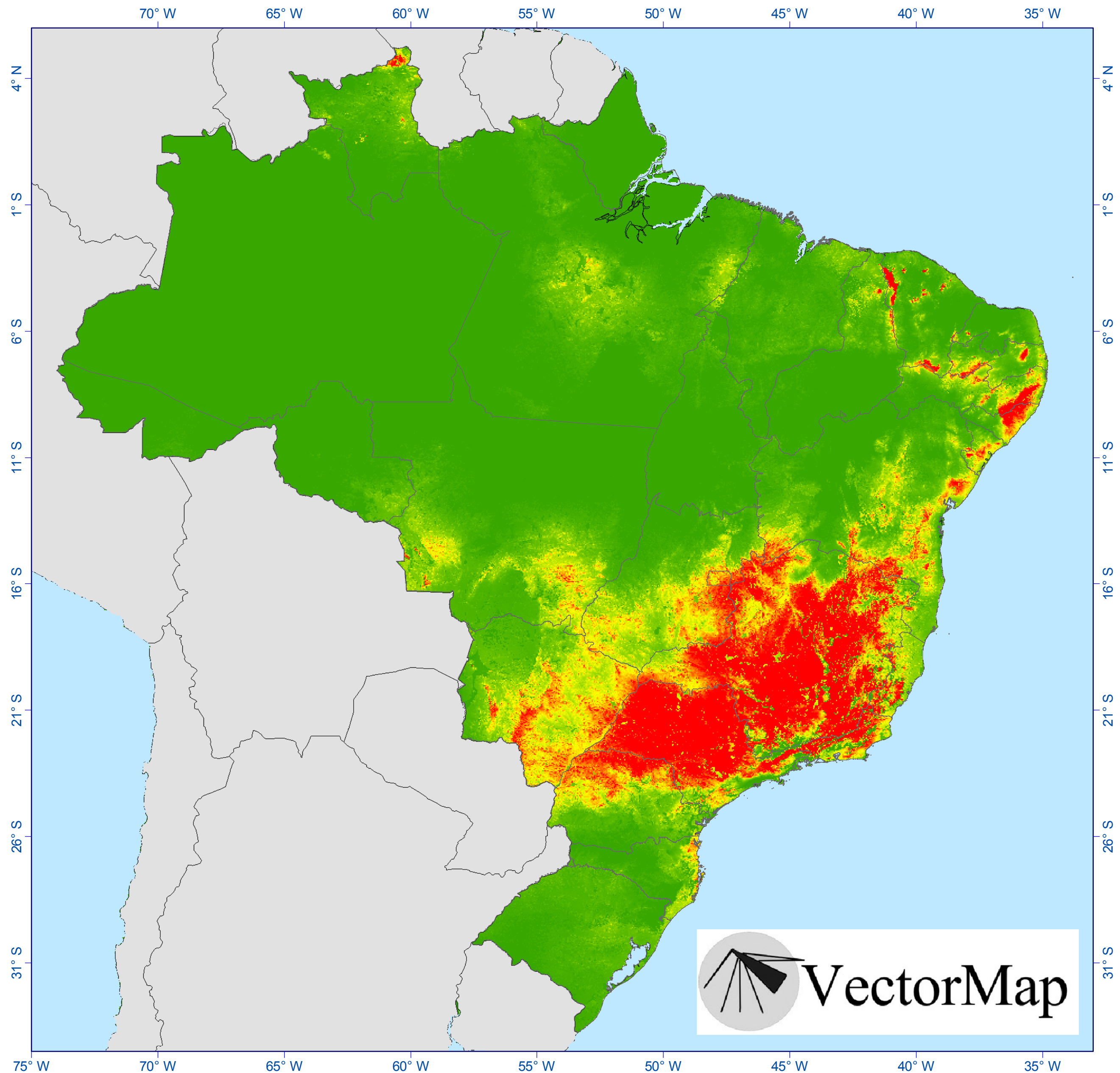


Habitat suitability of the sand fly: *Nyssomyia whitmani*



USNM:SandflyModel: Lu_whitmani_Dornak_1

ModelDescription: Maximum entropy - Maxent 3.2.1 (Phillips 2006)

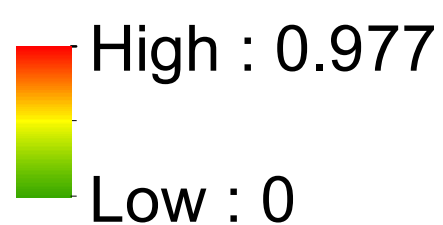
SubmitterOrganization: Walter Reed Biosystematics Unit (WRAIR, Division of Entomology)

NumberUniquePoints: 69 for training, 23 for testing

http://www.vectormap.org/Sandfly_Metadata.htm#vec12

DateLastModified: 2011-09-27

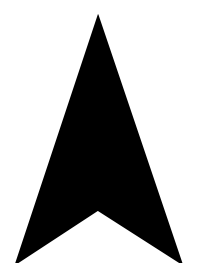
Habitat suitability



1:14,000,000



N



18 Aug 2015

The quality and completeness of data cannot be guaranteed. Users employ these data at their own risk. Any information derived herein is not an appropriate source for travel advice on disease risk. Always consult your physician for the latest advice prior to travel. This research was performed under a Memorandum of Understanding between the Walter Reed Army Institute of Research and the Smithsonian Institution, with institutional support provided by both organizations. The opinions and assertions contained herein are those of the authors and are not to be construed as official or reflecting the views of the US Department of the Army or the Department of Defense.